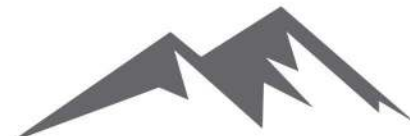




Beacon Pointe

of Cedar Lake

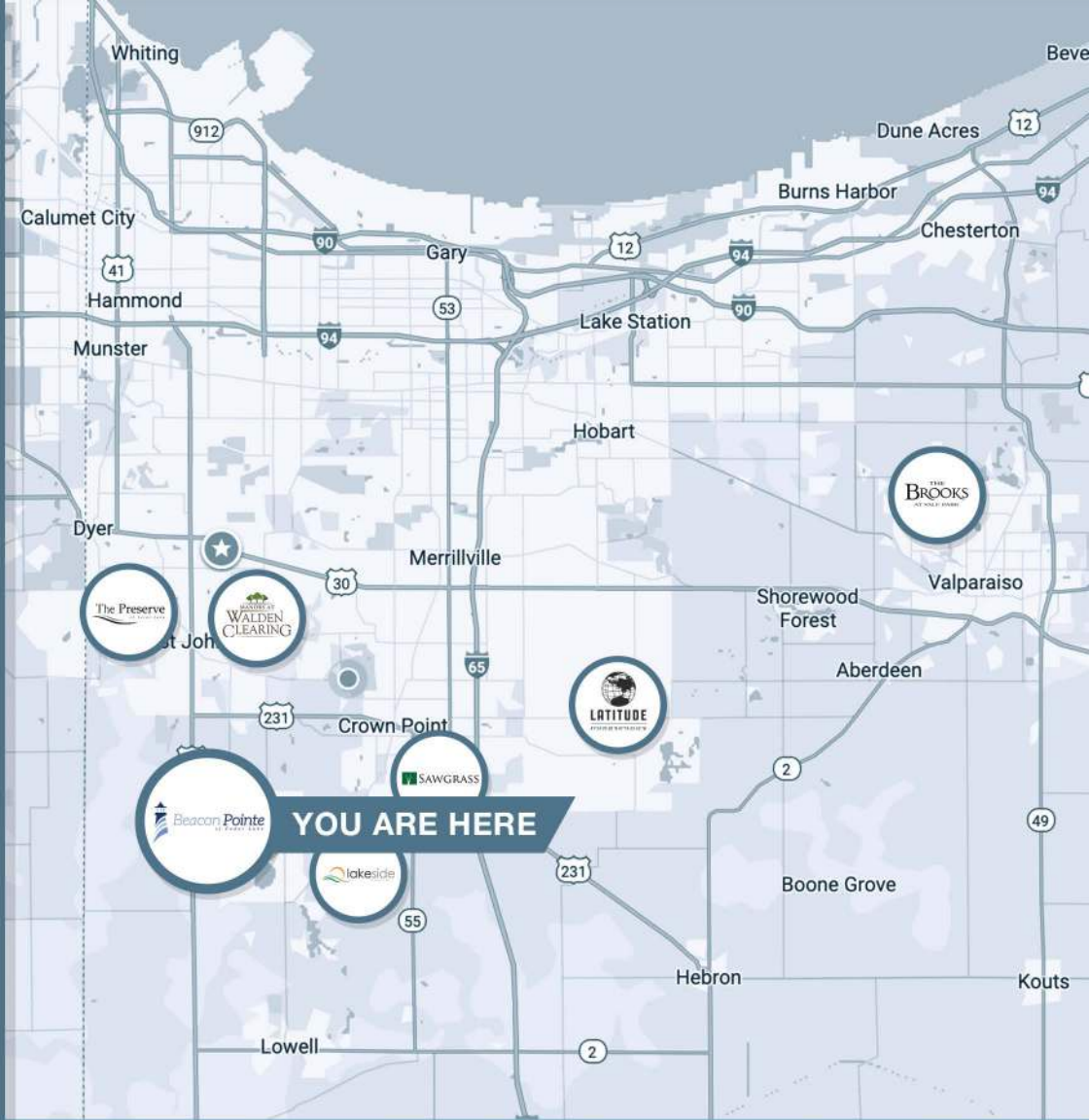
Community Brochure



DIAMOND PEAK
— HOMES —

Table of Contents

1. Community Map
2. Community Overview
3. Lot Map
4. Self Guided Tours
5. Path to Construction
6. Standard Features



OUR COMMUNITIES



The Preserve
St. John



Sawgrass
Crown Point



Walden Clearing
St. John



Latitude
Winfield



Beacon Pointe
Cedar Lake



The Brooks
Valparaiso



Lakeside
Cedar Lake



@diamondpeakhomes



Beacon Pointe
of Cedar Lake

**Building with Diamond Peak
in Beacon Pointe**

Looking for a small-town feel with big amenities? Cedar Lake's newest community, Beacon Pointe, has both! Conveniently located near the lake, shopping, and award-winning schools make this the perfect neighborhood! We are a quality builder offering semi-custom to fully custom homes available now. All homes will offer Diamond Peak's signature style and quality with an unparalleled building experience.



Lighthouse Restaurant
(3.6 Miles)



Cedar Lake
(1.0 Mile)



Lemon Lake Park
(4.1 Miles)



Strack & Van Til Grocery
(0.6 Miles)



Hanover Central High School
(1.2 Miles)



Target
(6.3 Miles)



Restaurants



Lake Life



Convenience

2

BEACON POINTE LOT MAP



Beacon Pointe
of Cedar Lake



LOT AVAILABILITY

Lot #	Size	SqFt
10	92'x147'	11,957
28	104'x158'	13,625
29	92'x150'	13,775
30	80'x154'	12,064
36	76'x160' (Rear 180')	17,271
37	77'x141' (Rear 115')	14,964
38	80'x132' (Rear 82')	10,603
40	101'x135'	10,937
41	101'x135' (Rear 58')	10,937
42	101'x135' (Rear 58')	10,937
43	101'x135'	10,937
44	82'x135' (Rear 65')	10,895



TOUR OUR MODEL HOMES

WITH NO AGENT REQUIRED

OPEN 7AM - 9PM, 7 DAYS A WEEK



CEDAR LAKE
13432 Lakeside BLVD



VALPARAISO
1954 Forest Ridge Dr



CROWN POINT
338 Sawgrass Dr





PATH TO CONSTRUCTION

MAY

SUN	MON	TUE	WED	THU	FRI	SAT
1	2	3	4	5	6	7
Deposit Received						
8	9	10	11	12	13	14
15	16	17	18	19	20	21
22	23	24	25	26	27	28
First Selections Meeting						
29	30	31				

JUNE

SUN	MON	TUE	WED	THU	FRI	SAT
			1	2	3	4
5	6	7	8	9	10	11
12	13	14	15	16	17	18
Finalization Meeting						
19	20	21	22	23	24	25
26	27	28	29	30	31	


JULY


SUN	MON	TUE	WED	THU	FRI	SAT
						1
2	3	4	5	6	7	8
9	10	11	12	13	14	15
16	17	18	19	20	21	22
Dig Date						
23	24	25	26	27	28	29
30						


- 1 May 1st - Deposit Received
- 2 May 23rd - First Selections Meeting
- 3 June 14th - Finalization Meeting
- 4 July 18th - Dig Date


PRECONSTRUCTION TASKS

The typical preconstruction process takes approximately 80 days from deposit to the dig date as long as the tasks below are completed within the timelines listed.

1  • Schedule first selections meeting no more than 21 days from deposit

3  • The dig date is approximately 5 weeks from the finalization

2  • Schedule finalization meeting no more than 21 days after the first selections meeting to review the final plan
• Issue all required documents to the municipality for permitting

4  • Diamond Peak Homes will not begin acquiring all necessary documents for permitting until finalization meeting

5

OUR STANDARD FEATURES

EXTERIOR

- 8' Basement Height
- 9' Main Floor with Flat Ceiling
- Poured Concrete Foundation Walls
- 2x6 Exterior Framing
- Certainteed Landmark Lifetime Architectural Shingles
- Tyvek House Wrap
- Cultured Stone Wainscoting on Front Elevation
- Vinyl and LP-Smart Side Exterior
- Aluminum Soffit and Gutters
- LP-Smart Side Fascia
- Cedar Ceiling in Porch
- Marvin Essential Windows
- Therma-Tru Front Door
- 8' Insulated Steel Garage Door with Windows
- Garage Door Opener with WiFi and Keyless Entry
- Non-insulated and Non-drywalled Garage
- 2 Frost Proof Hose Bibs
- Concrete Driveway, Service Walk, and Patio

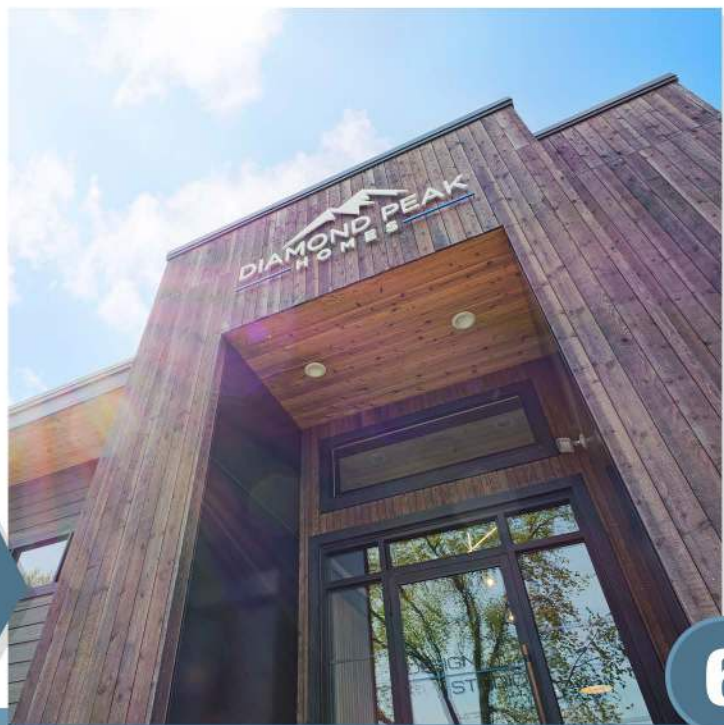
INTERIOR

- R-19 Batt Insulation on Exterior Walls
- R-38 Insulation Blown In Attic
- Smooth Drywalled Ceilings & Walls w/ Straight Edges
- Drywall Return Windows
- Walls & Ceiling Painted One Color
- Painted White Trim
- 4-1/4" Base Trim and 2-7/8" Case Trim on Doors
- Solid Core Interior Doors
- Luxury Vinyl Plank Flooring
- Porcelain Tile in Bathrooms and Laundry Room
- Shaw Cabana Life Carpet in Bedrooms, Closets, & living Room
- Carpeted Staircase with Drywall Knee Walls
- Medallion Silverline Cabinets
- Granite Countertops in Kitchen and Bathrooms
- Kichler Stamos Lighting Fixtures
- Oasis 5' Shower Stall in Master Bedroom
- Oasis 5' Tub/Shower in the Second Bathroom
- Kohler Bellera Plumbing Fixtures
- Kohler Single Bowl Stainless Steel Sink
- Double Oval Bowl in Master Bedroom
- Single Oval Bowl in the Second Bathroom

MECHANICALS, APPLIANCES, +EXTERIOR

- 92% Efficient Gas Furnace
- 14-Seer Air Conditioning Unit
- Tankless Water Heater
- Eco Bee Thermostat
- Nest Doorbell
- Whirlpool Appliance Package in Kitchen
- 12x12 Concrete Patio with Treated Steps
- Full Yard Sprinkler System
- Sod, Mulch, and Trees in Front Yard
- Seed Blanket in Back Yard

Visit Our Design Studio
1313 White Hawk Dr Crown Point IN





LEARN MORE ABOUT DIAMOND PEAK

 DIAMONDPEAKHOMES.COM  219.779.9464